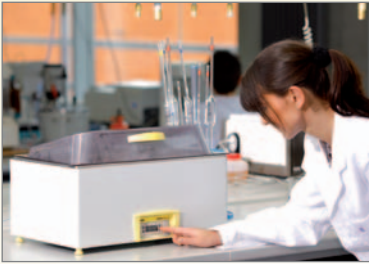


# LAUDA Aqualine

The universal water baths for the laboratory  
from 25 up to 95 °C



## Application examples

- Preparation of medical samples for analysis
- Temperature control of cytological samples
- Pre-thermostating of samples for spectroscopic tests
- Use in colleges and education

## Reliable, compact and ergonomic

The **LAUDA Aqualine** water baths offer an affordable entry into laboratory thermostating. The equipment range for basic applications in the laboratory stands out for its simple operation with digital LED display and high reliability. The devices have no circulating pumps and no

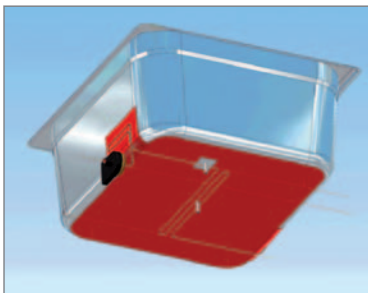
fittings within the bath. Consequently, they are corrosion-resistant, easy to clean or disinfect, and provide maximum use of internal bath space. The heating elements housed under the bath vessel ensure homogenous temperature distribution without localised overheating.

# Your advantages at a glance



## The Aqualine advantages

## Your benefits



- Heating of the bath bottom across the entire base
- Patented low-level protection, minimum fill level of only 2 cm

- Excellent temperature homogeneity in the bath and optimum use of the internal space
- Bath operation almost independent of the fill level



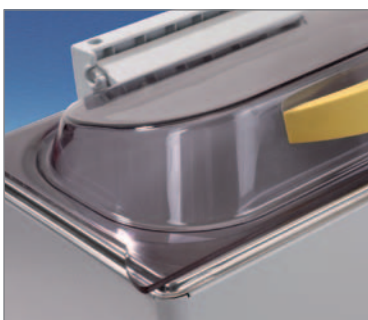
- Recessed operating elements
- Luminous digital LED display
- Controller electronics integrated into the housing

- Dirt and drip-proof electronics
- Easy operation
- Smallest possible unit footprint



- No heaters, sensors or other fittings in the bath vessel

- Easy-clean interior
- No niches for hidden growth of germs
- Full use of the bath



- Transparent polycarbonate gable covers removable without tools are a standard feature
- Optimised roof shape

- Easy and quick visual inspection of the samples in the bath
- Easy cleaning, no height restrictions
- Prevents sample contamination from condensation

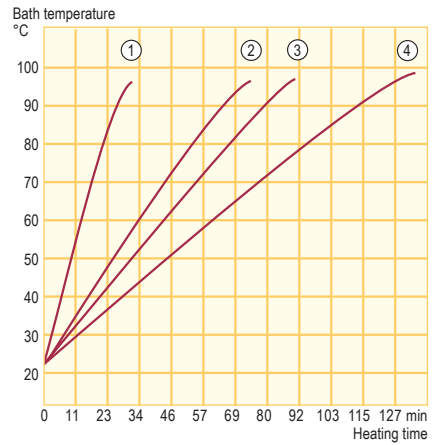
# LAUDA Aqualine

## Aqualine Water baths

The LAUDA Aqualine water baths are available in five different sizes. Depending on the size and the quantity of the samples, the user has the right bath depth or opening for his application at his disposal. All the baths are made from moulded stainless steel, and do not have any fittings. As a result, the interior is used to its full advantage, and the number of samples per bath is maximised. Above all, the LAUDA Aqualine is designed for the requirements of biological, medical and biochemical laboratories. Thanks to the patented heating concept, the baths also achieve a high level of temperature homogeneity.



### Heating curves Heat transfer liquid: Water, bath closed



- ① AL 2
- ② AL 5 · AL 12
- ③ AL 18
- ④ AL 25

### Temperature range

25...95 °C

### Standard accessories

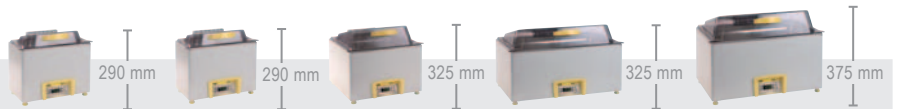
Transparent polycarbonate gable cover



AL 5 water bath



All technical data from page 88  
Other power supply variants on page 98



Technical features		AL 2	AL 5	AL 12	AL 18	AL 25
Working temperature range	°C	25...95	25...95	25...95	25...95	25...95
Temperature stability at 37 °C	±K	0.2	0.2	0.2	0.2	0.2
Heater power	kW	0.45	0.45	1.0	1.2	1.2
Bath volume	L	0.9...1.7	1...5	2...12	3...18	3...25
Bath opening/Bath depth	mm	300x151/65	300x151/150	329x300/150	505x300/150	505x300/200
Cat. No.	115 V; 60 Hz	LCB 4723	LCB 4724	LCB 4725	LCB 4726	LCB 4727

## Aqualine accessories

### Test tube racks

Polypropylene up to 95 °C

Cat.-No.:	Description	Qty. Tubes	Ø mm
UE 041	rack white	21	30
UE 040	rack white	24	25
UE 039	rack white	40	20
UE 042	rack white	60	16
UE 037	rack white	90	13
UE 047	rack yellow	21	30
UE 046	rack yellow	24	25
UE 045	rack yellow	40	20
UE 048	rack yellow	60	16
UE 043	rack yellow	90	13
<b>suitable for</b>	1 x in AL 5 2 x in AL 12 4 x in AL 18, AL 25		

### Test tube rack

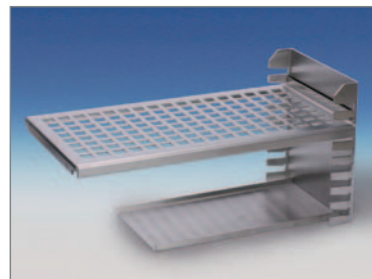
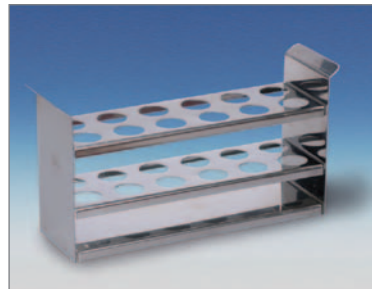
Stainless steel up to 150 °C

Cat.-No.:	Description	Qty. Tubes	Ø mm
UE 038	test tube rack stainless steel	12	20
<b>suitable for</b>	1 x in AL 5 3 x in AL 12 6 x in AL 18, AL 25		

### Platform

Stainless steel up to 100 °C, with eight height adjustable steps

Cat.-No.:	Usable area mm
LCZ 0689	140x270
<b>suitable for</b>	1 x in AL 12 2 x in AL 18, AL 25



Order the detailed LAUDA accessories brochure and the heat transfer liquids brochure free of charge. This and additional product information can also be found at [www.lauda.de](http://www.lauda.de)